



South East Wales Transport Alliance (Sewta)
Regional Transport Plan:
Interim Public Participation Statement

Final Report | June 2008

CAPITA SYMONDS

successful people, projects and performance

Sewta Regional Transport Plan Interim Public Participation Statement

Contents

1.	Background	1
2.	Participation – A Concept	2
3.	Participation to Date	2
	<i>Internal</i>	2
	<i>Partners and Stakeholders</i>	2
	<i>Other</i>	4
4.	Conclusion	4

Figures

- 1 How Sewta works with its Partners, Stakeholders and the Public

Tables

- 1 Partner / Stakeholder Participation

Public Participation Statement

1. Background

Sewta is a consortium of the ten local authorities in South East Wales (Blaenau Gwent, Bridgend, Caerphilly, Cardiff, Merthyr Tydfil, Monmouthshire, Newport, Rhondda Cynon Taf, Torfaen and Vale of Glamorgan).

Sewta operates through a Board of elected members (two from each authority) with co-opted representatives of the partners (Confederation of Passenger Transport, Network Rail, Bus Users UK, Arriva Trains Wales, Passenger Focus and Sustrans).

The Board is supported by a Directorate made up of senior officers of the ten constituent local authorities and nominees from the six partners. The Economic Development and Transport Directorate of the Welsh Assembly Government also has a place on the Directorate.

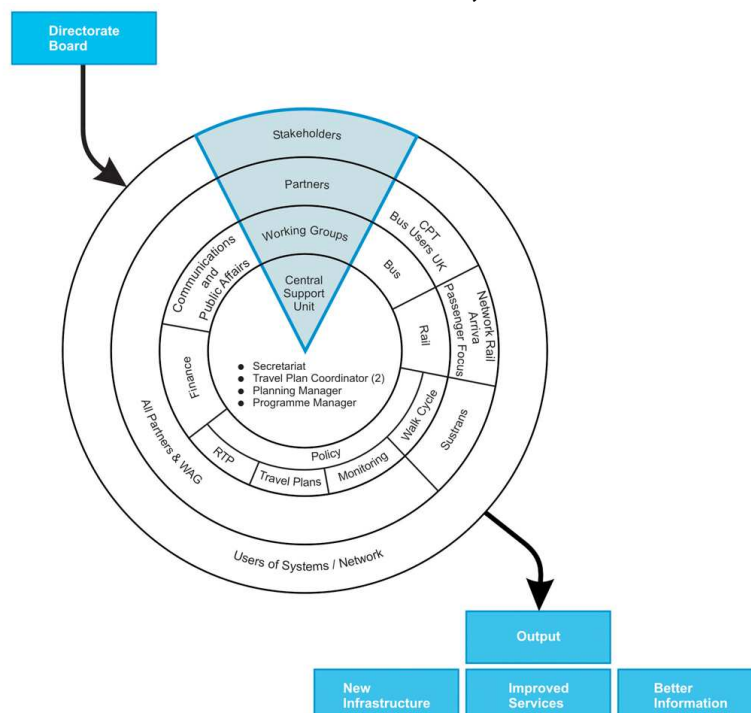
Technical work is carried out by a series of working groups, made up of officers from the authorities.

In addition to the formalised structure, there are also a wide range of stakeholders, including:

- Users and beneficiaries
- Service providers
- Those with governance responsibilities
- Those who influence public and technical opinion

The structure adopted by Sewta enables the effective engagement of all, and allows for effective public participation. The structure is illustrated in Figure 1.

Figure 1 – How Sewta works with its Partners, Stakeholders and the Public



2. Participation – A Concept

Sewta works closely with all its partners and stakeholders to improve transport for the community.

Sewta believes in undertaking meaningful engagement as part of the development of the Regional Transport Plan (RTP), at both participative and consultative levels, to ensure the community has the opportunity to directly influence the policies and proposals contained therein, thus engendering the ownership of the RTP by all.

3. Participation to Date

It is not appropriate to use the same participative techniques with all groups. As such, a range of public engagement mechanisms have been adopted to ensure maximum public engagement is achieved.

The methods have altered as the Plan has developed. This is because experience has shown that the general public are easier to engage once firm details are available to them; whereas stakeholders, pressure groups and corporate, community and voluntary organisations are more able to directly input into the development of the strategy.

A summary of the participation to date follows. For convenience this has been disaggregated into the following categories:

- Internal
- Partners & Stakeholders
- Other

Internal

Through the leadership of the RTP subgroup, all of Sewta's working and sub groups are consulted at each stage and contribute important elements to the production of the RTP.

Partners & Stakeholders

To maximise the impact of the participation exercises, the input of the partners and stakeholders frequently overlaps. Therefore, the input of both groups has been considered collectively. A summary of the structured participation of both groups is shown in Table 1. It should be noted, however, that additional informal engagement and consultation has occurred throughout the development of the draft RTP.

In addition, Sewta liaises closely with adjacent transport consortia as well as other local regional groups (South East Wales Economic Forum – SEWEF, Regional Planning Forum – SEWRPG and the Regional Housing Forum – SEWRHF), to ensure effective cross-discipline input to the RTP.

Table 1 - Partner / Stakeholder Participation

Name	Date	Form	Purpose	Target Groups	Number consulted/ invited	Number of responses/ attendees
Stakeholder Questionnaire	May 2006	Detailed questionnaire	Issued with the invitations to the Stakeholder Consultation Day to 1) enable those who were unable to attend the event to have an input, and 2) allow workshop attendees to formally submit their comments outside of the workshop environment.	Stakeholders, Partners, Community & Town Councils, Transport Operators, Pressure Groups, Business Forum, Other Interested Parties	247	25
Local Authority Officers' Questionnaire	May 2006	Detailed questionnaire / data collection	To identify transported related problems and issues from the local authorities perspective	Local Authorities (all transportation functions)	10	10
Member Consultation Day	May 2006	Facilitated Interactive Workshops	To enable Members to provide direction to the RTP and, as representatives of the public, enable them to provide an input into the problems and opportunities for regional transport.	Council Members	50	44
Partner Interviews	June 2006	Structured face-to-face interviews	To ascertain partner views on the direction and content of the RTP	Partners	6	6
Stakeholder Consultation Day	July 2006	Facilitated Interactive Workshops	Gain the opinions of a wide range of stakeholders on their vision, opportunities, themes, possible measures and the way forward for transport in South Wales	Stakeholders, Partners, Community & Town Councils, Transport Operators, Pressure Groups, Business Forum, Other Interested Parties.	247	39
Draft SEA Scoping Report Consultation	July 2006	Document Consultation	To ascertain the views of statutory bodies on the proposed SEA process and Scoping Report	Statutory Consultees	3	3
Local Government Officers (multi-disciplinary) Consultation Day	Sept 2006	Facilitated Interactive Workshops	To ascertain the views of local government officers to ensure the emerging document covers all aspects of local government.	Senior Local Government Officers (multi-disciplinary)	51	40
Outline Regional Transport Plan Consultation	Jan 2007	Document Consultation	To obtain the comments of all parties on the Outline Plan, to enable their comments to influence the draft plan.	Stakeholders, Partners, Community & Town Councils, Transport Operators, Pressure Groups, Business Forum, Other Interested Parties, The Public	Unlimited	20
Preliminary Programme Consultation (Draft RTP)	April 2008	Facilitated Group Discussion	To develop the preliminary programme for inclusion in the draft RTP	Local Authorities	15	14

Other

Sewta carried out opinion surveys in 2005. Respondents ranked different aspects of rail and bus services as poor, average, good or excellent which assisted in the identification of current levels of satisfaction with public transport.

In addition to the bespoke participation exercises undertaken by Sewta, extensive use has been made of other public consultation exercises that have been carried out, both nationally and locally by third parties, to provide background understanding for the development of the RTP. For example, the National Passenger Survey, undertaken by Passenger Focus for all Arriva Trains Wales services on a six monthly basis, provides a twice-yearly picture of rail users' satisfaction. This information provides a useful insight into the passenger experience; however, third party information has always been considered within the context of which it is collated.

4. Conclusion

To date, Sewta has undertaken an appropriate and thorough participation process that has enabled all parties to directly input into the development of the RTP.

Sewta is in the process of further developing its participation strategy to maximise the impact of its engagement with all parties as the RTP progresses towards adoption - and beyond.

www.capitasymonds.co.uk

Please contact:

Capita Symonds
Tŷ Gwent
Lake View
Llantarnam Park
Cwmbran NP44 3HR

Tel: +44 (0)1633 463333
Fax: +44 (0)1633 463399